



**FLUXOME
RESVERATROL**

Product Data Sheet

Description

Fluxome® Resveratrol is a nutraceutical ingredient, which consists of natural trans-resveratrol produced by fermentation. The product is supplied in a powder form for use in the supplement, functional food, cosmetics, cosmeceuticals and pharmaceutical industries.

Specifications

Appearance	Off-white powder
Bioactive ingredient	Trans-resveratrol
Solubility	Soluble in ethanol and other organic solvents. Only slightly soluble in water

Product Composition

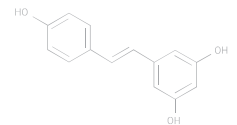
Test	Spec range	Method
Trans-resveratrol, dw w/w	> 98%	HPLC-MS
Coumaric acid, HPLC	< 0.3%	HPLC
Cis-resveratrol, HPLC	< 0.2%	HPLC
Pinosylvin, HPLC	< 0.2%	HPLC
Water	< 3%	Karl Fischer

Fluxome® Resveratrol is certified as kosher by the OU.

02/14/2011

Trans-resveratrol

CAS 501-36-0
C ₁₄ H ₁₂ O ₃
Molecular weight: 228.24 g/mol



Microbial & Contaminant Analysis

Test	Spec range	Method
Total aerobic plate count	< 1500 CFU/g	Bam 8 th
Coliforms	< 3/g (absence)	Bam 8 th
Salmonella	Negative in 25 g	Bam 8 th
E. Coli	< 3/g (absence)	Bam 8 th
Yeast/Mold	<100 CFU/g	Bam 8 th
Solvents (ethanol)	< 1000 ppm	GC
Lead	< 1 ppm	AAS
Arsenic	< 1.5 ppm	AAS
Cadmium	< 2.5 ppm	AAS
Mercury	< 1.5 ppm	AAS

Storage and Packing

Storage	5-7 °C in dry conditions
Stability	>95% trans-resveratrol dw w/w by HPLC after 1 year when stored in the original unopened packaging under recommended storage conditions
Packing	5 kg alu-foil bag-in-box/bag-in-drum